

DOE - Current Fully Online Course Statistics and Info

Delhi Online Education

Overview

SUNY Delhi is offering several courses and programs fully online in the Moodle (Vancko Hall) virtual learning environment. There is one online Bachelor's program in Veterinary Technology Management and one in Nursing RN to BSN.

Enrollment in fully on-line courses

*derived from Cool Query: ENRL01_ONLINE_COURSE_ENROLLMENT

**derived from Cool Query ENRL01_ONLINE_COURSE_STUDENTS

***derived from Cool Query ENRL01_ONLINE_COURSE_PERSISTENCE



Key

class sections at census: any class at census with an assigned instructor and 1 or more students enrolled*

course enrollments: aka Course registrations: Census Enrollment field (the total number of online course enrollments at census - meaning, 1 student can be enrolled in 3 courses, which counts as 3 enrollments)*

instructors: number of unique online instructors*

of unique students in a fully online course **

% Avg. Successful Completion: average successful completion for that term (total number of students who complete course with passing grade / total number of students at census) ***

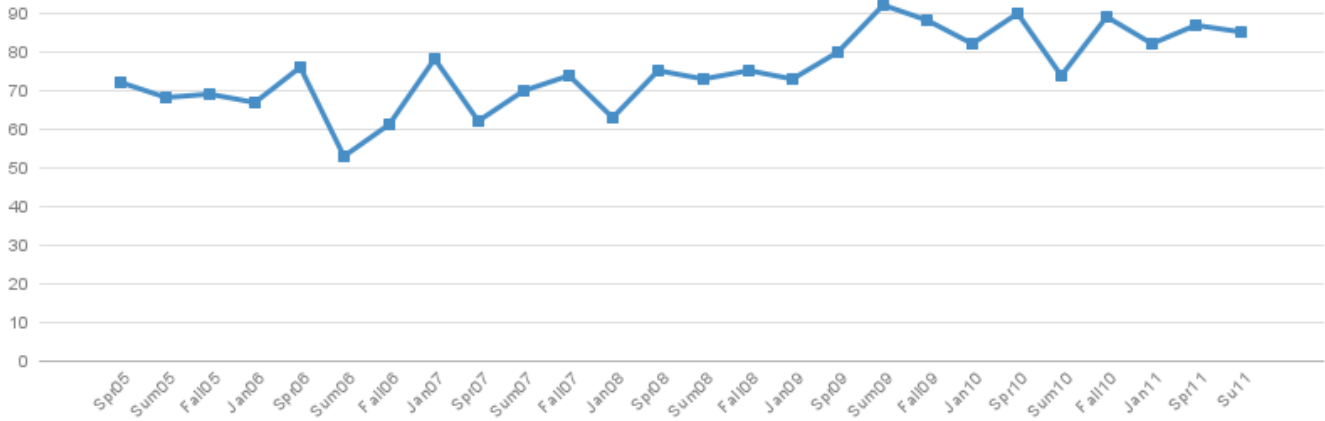
FTE Online Tech Support staff = number of staff directly dedicated to supporting online students and faculty

instructors w/out web-enhanced courses: number of different instructors who are teaching fully online courses and are not listed on the 'Web-Enhanced Usage Statistics' page for the corresponding semester

Term	Fall 2011	Summer 2011	Spring 2011	J-Term 2011	Fall 2010	Summer 2010	Spring 2010	J-Term 2010	Fall 2009	Summer 2009	Spring 2009	J-Term 2009	Fall 2008	Summer 2008	Spring 2008
class sections at census	88	62	77	4	76	50	72	6	66	36	52	6	39	25	18
course enrollments	1471	621	1310	44	1101	526	1029	45	908	381	758	65	509	282	271
instructors	45	41	42	4	37	30	34	6	33	24	27	6	19	19	10
# PT/FT					21/16	18/12									
% PT/FT					57/43	60/40									
# of unique students in a fully online course	833	462	747	43	573	316	580	43	486	236	434	60	329	205	225
Avg. Successful Completion		85%	87%	82%	89%	74%	90%	82.22%	88.18%	76.90%	82.25%	92.31%	80.16%	73.05%	74.91%
FTE Online Tech Support staff	2	2	2	2	2	2	2	2	2	2	1 + 1 intern	1	1 + .25 work study	1 + .25 work study	1 + 1 inter

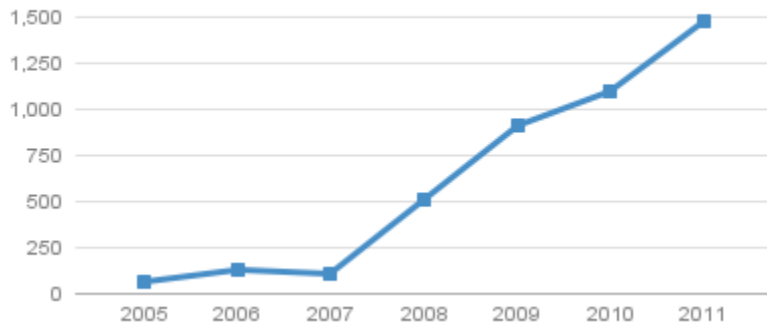
Successful Completion

Successful Completion Percentage

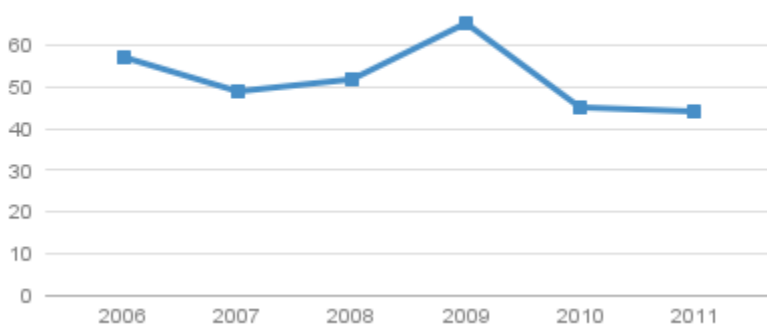


Number of Enrollments by Semester

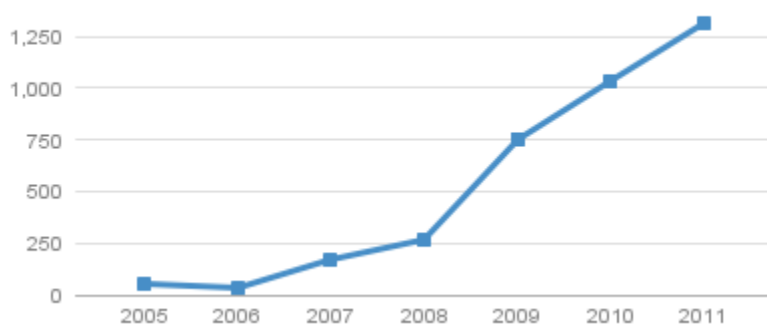
of Enrollments -Fall Semesters



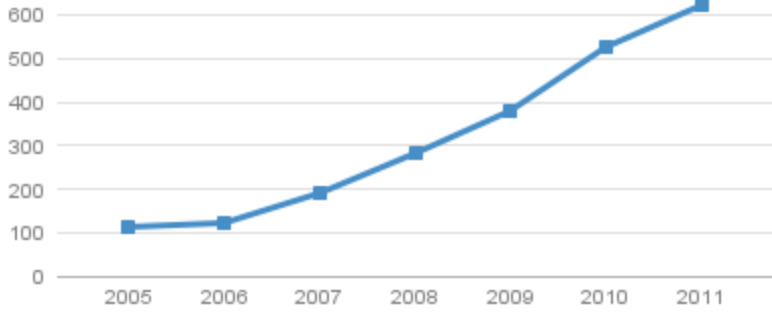
of Enrollments -January Term



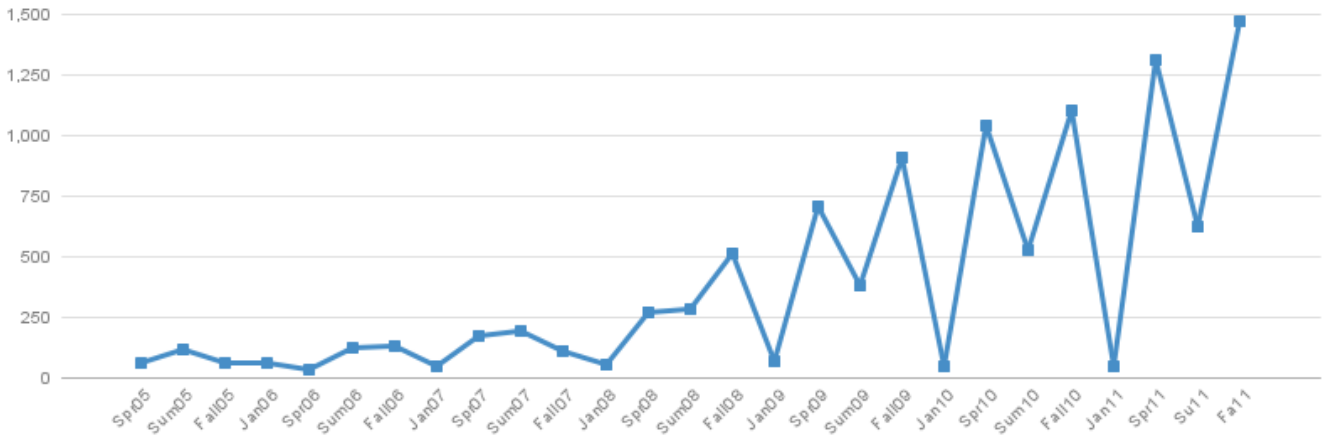
of Enrollments -Spring Semesters



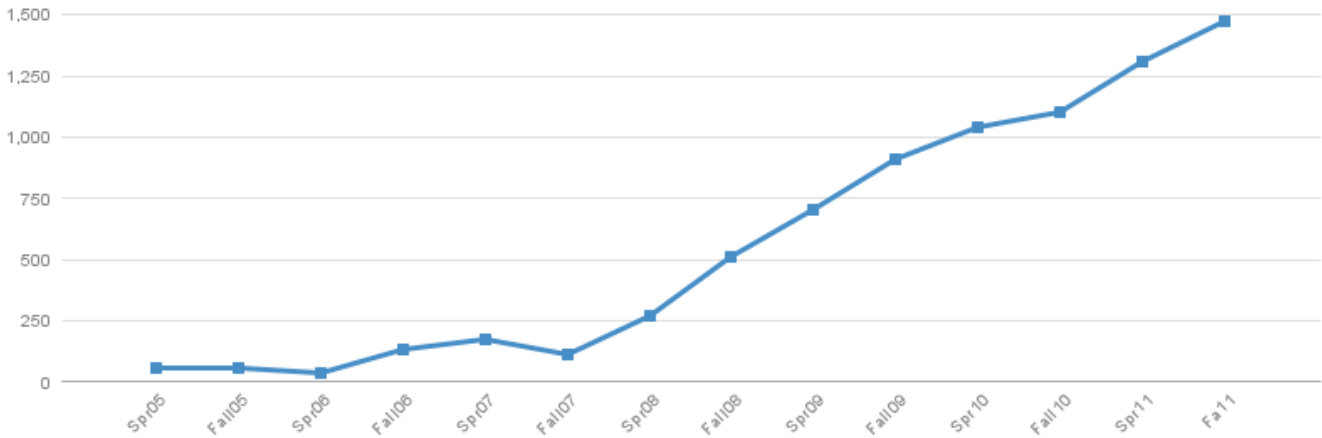
of Enrollments -Summer Semesters



of Enrollments by Semester

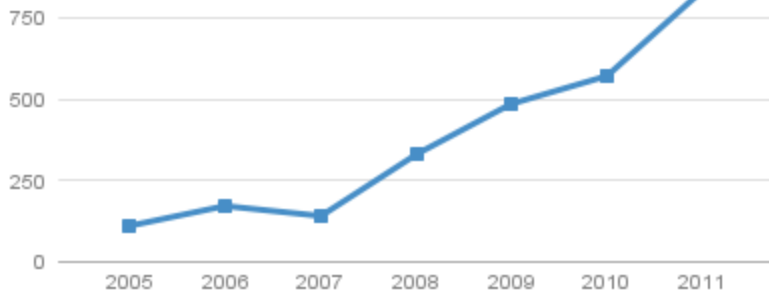


of Enrollments by Semester: Fall/Spring Only

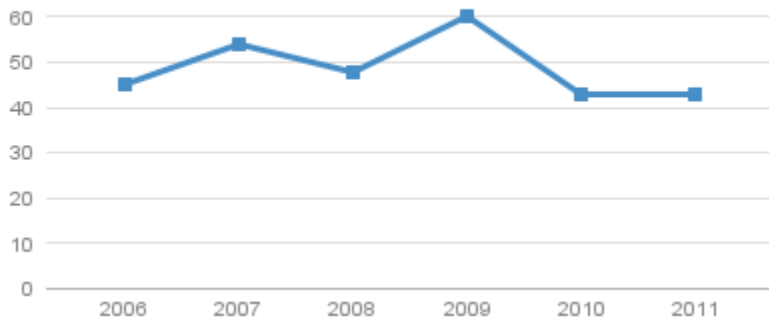


Number of Unique Students by semester

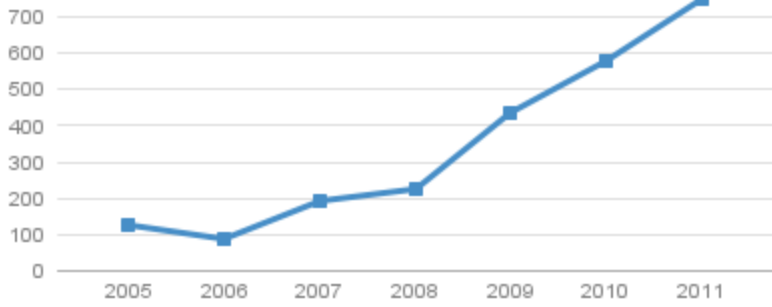
of Unique Students -Fall Semesters



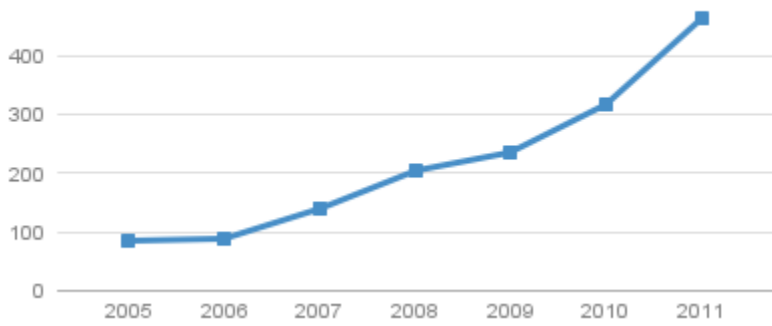
of Unique Students -January Term



of Unique Students -Spring Semesters



of Unique Students -Summer Semesters

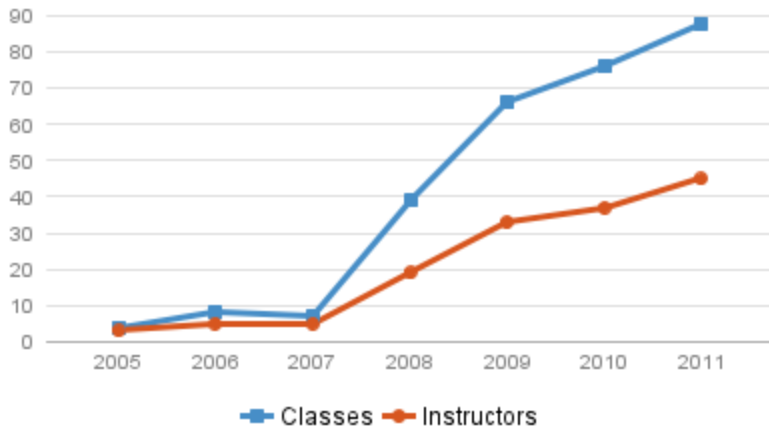


of Unique Students by Semester



Number of Classes and Instructors at census by semester

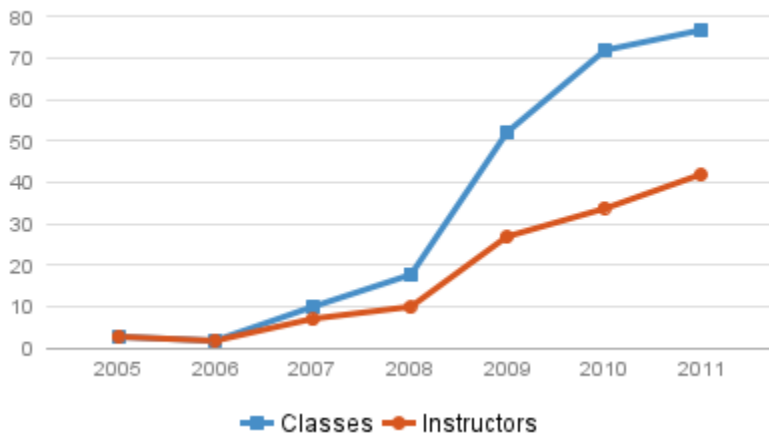
Fall Semesters



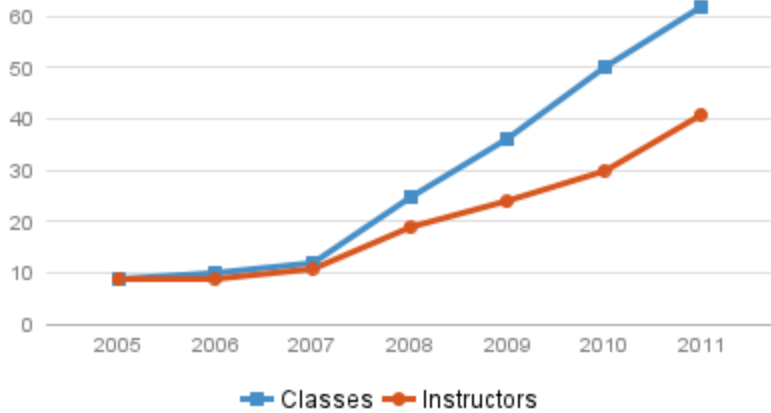
Winter Semesters



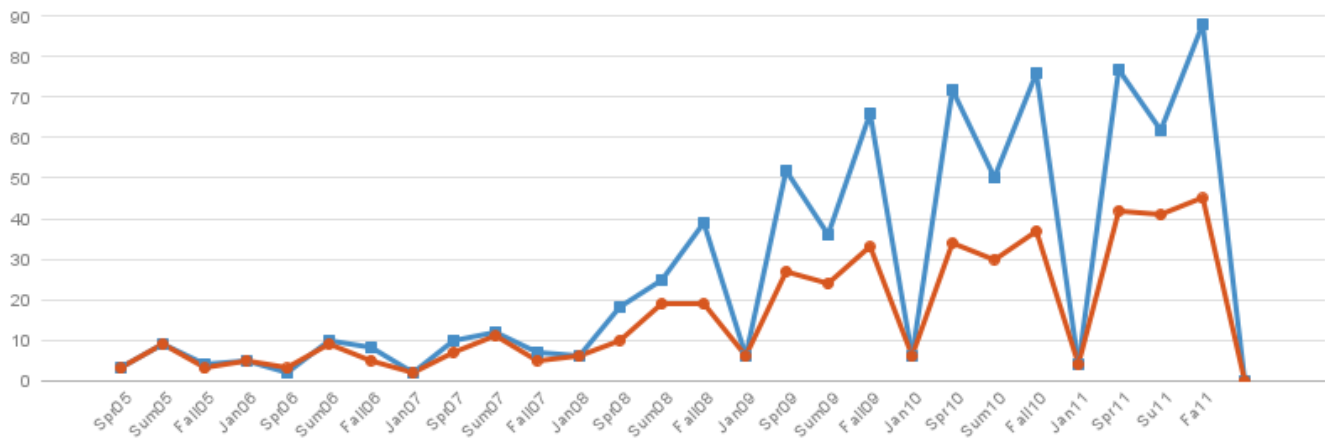
Spring Semesters



Summer Semesters



of Classes and Instructors at census by Semester



Year begins with the Fall Semester.

Year	Total # of classes	change	Total # of enrollments	change	Enrollment Growth % Rate
2010-2011	213	(+19)	3060	(+552)	22%
2009-2010	194	(+61)	2508	(+795)	47%
2008-2009	133	(+77)	1713	(+997)	139%
2007-2008	56	(+24)	716	(+170)	31%
2006-2007	32	(+11)	546	(+272)	99%
2005-2006	21	(+3)	274	(+12)	5%
2004-2005	18	(+3)	262	(+61)	30%
2003-2004	15	(+4)	201	(+59)	42%
2002-2003	11	(+2)	142	(+60)	73%
2001-2002	9	(+3)	82	(+33)	67%
2000-2001	6		49		

Also see [DOE Course Enrollment History](#)